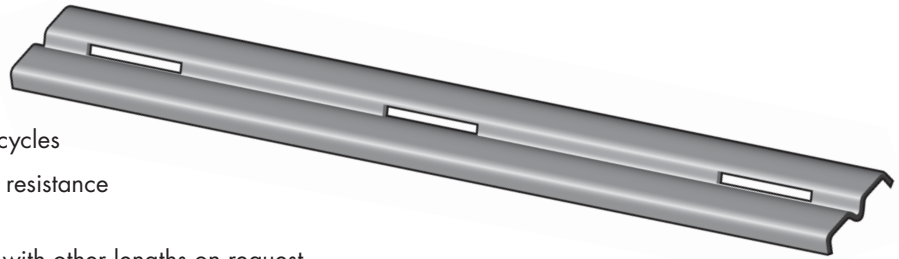


Channels and Roof Mats



T-Channels

- Increased strength, compared with roof mats
- Easily installed with regular bolting cycles
- T5 channels for higher strength, less resistance to ventilation
- Available in 4' through 20' sections with other lengths on request
- Gauges range from 12 gauge to 5/16" Channels have tensile strength of 36,000 to 80,000 psi
- High beam strength resists roof sag
- Use with JENNMAR Advanced Channel Plates



Roof/Rib Safety Channel

- Gauges range from 12 gauge to 5/16"
- Tensile strength of 38,000 to 80,000 psi
- Prevents accidents caused by rib-roll
- Promotes safe working environment
- Easy to install
- Enhances beaming effect
- Provides resistance to roof sag and rib sloughage
- For use with JENNMAR® Channel Plate

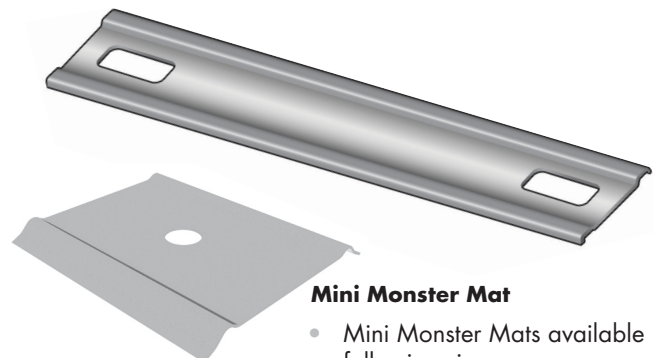


Roof/Rib Safety Channel

- Controls roof/rib sloughage
- Controls "cutter" roof
- Enhances performance of wire mesh
- Easy installation
- Provides active support to roof and rib
- Prevents accidents caused by rib-roll and sloughage
- Promotes safe working environment

Roof Mats

- Temporary or permanent preventive for roof deterioration, as addition to roof bolt plan
- Lengths 54" to 240"; seven widths from 4-1/2" to 10-1/2"
- Gauges 10, 2, 14, 16
- Hot rolled, cold rolled, galvanized
- Strong and flexible; bolt holes punched to suit your roof bolt plan
- Custom sizes available



Mini Monster Mat

- Mini Monster Mats available in following sizes:
13" x 16", 13" x 24", 10" x 24"

Custom sizes and/or galvanizing available on request.